

March 05–September 04, 2016  
**New Sensorium**  
**Exiting from Failures of Modernization**

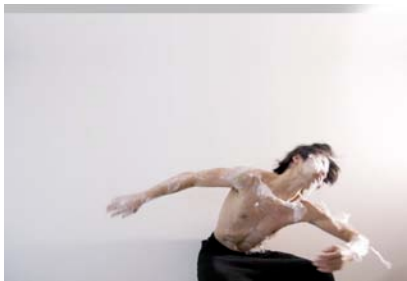
**Press Photos**



2016\_ns\_Lin-Ke\_001.jpg

Lin Ke, *Data Foam Board*  
 2013

Archival inkjet print  
 © Lin Ke Courtesy of Gallery Yang, Beijing



2016\_ns\_Mirai Moriyama\_Upload a new mind  
 the body\_002.jpg

Mirai Moriyama, *Upload a New Mind to the  
 Body*  
 2016

© the artist, photo: Koushi Miura



2016\_ns\_Sputniko!\_THE MOONWALK  
 MACHINE-SELENA'S STEP\_003.jpg

Sputniko!, *The Moonwalk Machine  
 Selena's Step*  
 2013

Video, Lambda Print, and Device Installation

© Courtesy the artist and SCAI The  
 Bathhouse, Tokyo; photo: Rai Royal



2016\_ns\_Sputniko!\_THE  
 MOONWALK\_MACHINE\_004.jpg

Sputniko!, *The Moonwalk Machine  
 Selena's Step*  
 2013

Video, Lambda Print, and Device Installation

© Courtesy the artist and SCAI The  
 Bathhouse, Tokyo; photo: Rai Royal

**Press Information**

February 2016

**New Sensorium. Exiting from  
 Failures of Modernization**  
 Exhibition

Location  
**ZKM\_Lichthof 1 + 2**

**Press Conference**  
 Thu, Mar 04, 2016, 11 am

**Opening**  
 Fri, Mar 05, 2016, 7 pm

**Duration**  
 March 05–Sept 04, 2016

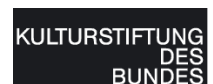
**Press Contact**  
 Dominika Szope  
 Head of Department Press  
 and Public Relations  
 Tel: +49 (0)721 / 8100 – 1220

Regina Hock  
 Assistant Press and Public  
 Relations  
 Tel: +49 (0)721 / 8100 – 1821

E-Mail: [presse@zkm.de](mailto:presse@zkm.de)  
[www.zkm.de/presse](http://www.zkm.de/presse)

ZKM | Center for Art and Media  
 Karlsruhe  
 Lorenzstraße 19  
 76135 Karlsruhe  
 Germany

Gefördert durch



Mit Unterstützung

**SCAI THE BATHHOUSE**





2016\_ns\_Tarek-Atoui\_Below 160\_005.jpg

Tarek Atoui, *Below 160*

2012

Workshops and Performance  
© Sharjah Art Foundation



2016\_ns\_Maria-Taniguchi\_I See, I Feels\_006.jpg

Maria Taniguchi, *Untitled*  
2015

acrylic on canvas

© Courtesy of the artist and carlier | gebauer,  
photo: Nick Ash



2016\_ns\_Nile-Koetting\_Hard In Organics\_007.jpg

Nile Koetting, *Hard In Organics*  
2015

Two channel video with mixed media  
installation, installation view at Yamamoto  
Gendai

© Nile Koetting



2016\_ns\_Eiji-INA\_Rhizomatiks\_008.jpg

Eiji INA, *Rhizomatiks*  
2014

Realtime visualization of Tokyo Stock  
Exchange

© Eiji INA